

2011

Licking County Health Department



Public Health
Prevent. Promote. Protect.

Mid-Year Report



Our Mission:

Prevent Disease, Protect the Environment, and Promote Healthy Lifestyles in the Licking County Combined General Health District.

Our Vision:

Healthy People in Healthy Communities

Licking County Health Department
675 Price Rd., Newark OH 43055
(740) 349-6535
www.lickingcohealth.org





Health Commissioner's Report

Like most public agencies, one of the main challenges during the first half of 2011 has been planning for, and responding to funding cuts. Most of our grants have seen funding reductions of 10-50%. For the 2011-12 grant year, Help Me Grow funding was cut by \$94,000 and Public Health Emergency Preparedness funding was cut by \$149,350.

We are focusing on improving the quality and efficiency of our programs and services, while assessing the health needs of the community. We are working with our public health partners to fill gaps and reduce duplication of effort. Visit www.healthylc.org for more information on the Community Health Improvement Project.

So far this year:

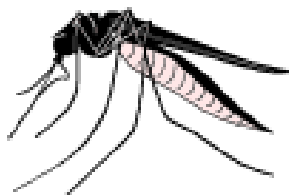
- The Community Health Improvement Committee completed the Community Health Improvement Plan and Action Items.
- A Healthy Homes Coalition was created to bring together agencies and programs that work to assure safe and healthy housing in Licking County.
- Held a well attended "Change Gears, Ride a Bike" bike ride event.
- Our Komen grant for the SASS breast cancer program was fully funded, and increased \$28,000 over last year. This will allow us to increase staff hours slightly and to screen more women.
- We received a notice of award of \$10,000 from the Ohio Voluntary Accreditation Team for Quality Improvement program implementation and training.
- We received "Promising Practice" recognitions from NACCHO (National Association of County and City Health Officials) for our flu reporting system and our breast cancer programs.
- A Behavioral Risk Factor Surveillance System survey of Licking County residents is underway. When completed, 600 households will have been surveyed.
- The Kickin' Ash Splash tobacco free pool party was held on July 9th at the Heath City Water Park with over 900 in attendance.
- Opened a Women's Health Clinic which provides pap tests and breast cancer screenings to women who meet the Breast and Cervical Cancer Program guidelines.

What's next?

- We have begun performing food service operation and retail food establishment inspections using tablet computers and portable printers. This will provide data on code violation types and frequencies.
- The Ohio EPA awarded a grant for SWEEP (Sewage and Wastewater Elimination Education Program) that will provide tank pumping reminders and education to property owners with residential sewage treatment systems.
- We continue to prepare for national accreditation. We will apply to be in the first round of health departments under this new accreditation. This will allow us to have an external evaluation of our department, leading to improvements in providing services to our residents.

Environmental Health Division

Mid-Year Environmental Health Statistics	2010			2011		
	Permits	Inspect	Consult	Permits	Inspect	Consult
Food Service Operations	552	992	323	544	736	454
Food Establishments	206	254	154	202	241	246
Mobile	78	126	51	83	154	50
Vending	115	67	8	115	37	5
Temporary Food Event	40	26	12	35	24	18
Manufactured Home Park	37	41	26	38	49	13
Campground	14	12	12	12	8	6
Day Camp	9	5	0	9	3	2
Pools and Spas	68	221	14	69	193	51
Bathing Beaches	2	2	0	1	1	2
Waste Facility	2	110	9	3	112	121
Schools	66	53	19	66	71	28
Tattoo/Body Piercing	8	6	5	8	6	9
New Sewage Installations	33	25	191	18	54	166
Sewage Alterations	2	7	22	22	23	2
Existing Sewage Systems		52	37		71	50
Semi-Public Sewage	312	268	6	273	45	7
Private Water Systems	71	60	93	81	93	71
Plumbing Residential	649	815	508	209	420	22
Plumbing Commercial	66	75	75	71	223	23
Water Samples Collected		161			153	
Nuisance Complaints	#	Inspect		#	Inspections	
Solid Waste	371	351		328	326	
Sewage	20	48		21	45	
Food	52	52		46	50	
Smoking	38	25		35	40	
Other	17	20		8	17	
Total	498	496		438	478	
Rabies / Animal Bites						
Dog	112			115		
Cat	38			32		
Raccoon	1			2		
Other	6			8		



The unusually wet spring brought high numbers of mosquitoes. Our vector control staff have been busy treating standing water to control mosquito breeding sites, and spraying to reduce adult mosquito populations when needed.

Public Health Nursing and Child and Family Health Services

Nursing Programs	Jan-June 2010	Jan-June 2011
Immunizations (# of Children)	1039	737
International Travel Vaccine Clients	239	293
HIV Testing	550	321
STD Clinic Clients	285	343
Jail HIV/Hepatitis Clients	134	15
Help Me Grow Home Visits	564	318
Early Head Start Home Visits	450	1,019
At Risk Pregnancy Consultations	1,056	1,086
Breast & Cervical Cancer Program (BCCP) Women Served	555	999
BCMh Visits/Consultations	121	127
Dental Sealant Children Served	781	1,136
TB Tests	845	404
Lice Home Visits	168	0
Home Health Visits	38	31
Patient Navigation Referrals	95	263

Travel Vaccination Clinic

Country information, health precautions, official health data and travel warnings.

Immunizations for various diseases based on the prevalence of disease in specific countries.



Women's Health Clinic is a new program that serves low income women who qualify for free breast and cervical cancer screenings. 40 women have been screened for cancers so far this year.

Pediatrician John Applegate, D.O. was honored by our immunization program for his practice's excellent immunization series completion rates for children. In 2010, more than 90 percent of Dr. Applegate's patients in that age group were completely up to date on all immunizations.

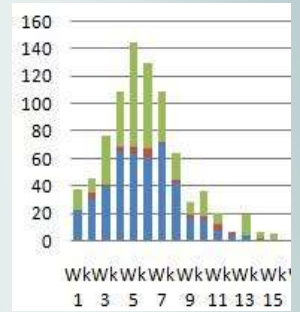


Licking County's Women, Infant, and Children's Supplemental Nutrition Program (WIC) provides nutrition education and screening, supplemental foods, and referrals to women (pregnant, postpartum, and breastfeeding), infants, and children less than 5 years old.

WIC clinics are held at the Price Rd. office as well as satellite locations in Johnstown, Buckeye Lake, and Pataskala.

Communicable Disease Report Jan-June	2010 MidYear	2011 MidYear
Amebiasis	0	0
Botulism, infant	0	0
Brucellosis	0	0
Campylobacteriosis	15	21
Chlamydia	177	152
Coccidioidomycosis	0	1
Creutzfeldt-Jakob Disease	1	0
Cryptosporidiosis	3	1
E. coli - enterohemorrhagic (shiga toxin producing) - Not O157:H7	0	1
E. coli - enterohemorrhagic (shiga toxin producing) O157:H7	1	0
E. coli - enterohemorrhagic (shiga toxin producing) Unknown serotype	1	1
Giardiasis	3	0
Gonorrhea	27	13
Haemophilus influenzae (invasive disease)	1	3
Hemolytic uremic syndrome (HUS)	0	0
Hepatitis A	1	1
Hepatitis B (including delta) - acute	1	2
Hepatitis B (including delta) - chronic	10	1
Hepatitis C - acute	0	1
Hepatitis C - chronic	43	34
Influenza-Hospitalized	3	27
Influenza-Seasonal	N/A	839
LaCrosse virus disease (other California serogroup virus disease)	0	0
Legionellosis - Legionnaires' Disease	3	0
Leptospirosis	0	0
Listeriosis	0	1
Lyme Disease	4	1
Meningitis - aseptic/viral	2	4
Meningitis - bacterial (Not N. meningitidis)	2	1
Meningococcal disease - Neisseria meningitidis	0	1
Mumps	0	0
Pertussis	59	4
Rabies - animal	0	0
Rocky Mountain spotted fever (RMSF)	0	0
Salmonellosis	4	6
Shigellosis	0	0
St. Louis encephalitis virus disease	0	0
Streptococcal - Group A -invasive	1	1
Streptococcal - Group B - in newborn	0	0
Streptococcal toxic shock syndrome (STSS)	0	0
Streptococcus pneumoniae - invasive antibiotic resistance unknown	25	2
Varicella	11	6
West Nile virus disease (also current infection)	0	0

Epidemiology



LCHD launched the Influenza Reporting Improvement System (IRIS) project which allows us to track influenza cases diagnosed in doctors offices, labs, and hospitals.

During the H1N1 outbreak, very few lab confirmed cases were reported, although doctors offices and schools were reporting high flu activity.

These weekly reports from physician offices help us identify outbreaks early and enhances our prevention efforts.

The project was recognized by the National Association of County and City Health Officials as a Promising Practice.

Emergency Preparedness

- Highest rated health department in Central Ohio region for the City Readiness Initiative.
- Participated in L.E.P.C. meetings and site inspections.
- Continued to develop and maintain emergency response plans.
- Expanded membership in the Licking County Medical Reserve Corps.
- Revised and updated the department's Emergency Operations Plan.
- Enhanced our infectious disease monitoring capabilities.
- Strengthened our relationships with emergency response and healthcare providers.



Health Promotion and Education

- Provided free car seats to 21 low income families and 31 installation checks.
- The "We're Active Licking County" physical activity program held the 2nd annual Change Gears bike event and distributed 50 bike helmets and 50 water bottles to the 81 participants.
- Promoted Bike to Work Week.



- Free mammograms were provided to 92 women through the SASS (Screening and Survivor Support) breast cancer program. 6 women were provided with additional diagnostic follow-up testing.
- Hosted "Spring into Pink" and Summer Update breast cancer survivor events.
- 1,400 3rd grade children received health, exercise, and wellness lessons.
- Traffic safety initiatives included Motorcycle Safety, Super Bowl Impaired Driving Prevention, and Click it or Ticket campaigns.
- Participated in "Our Futures in Licking County" campaign activities and committees. Conducted 3 alcohol and 40 tobacco sales to minors compliance checks.
- Attended health fairs, parades, and events throughout the county.
- Provided health education and led wellness activities for Newark City Parks Fitness Camp.
- Participated in: Newton School Wellness Committee, MORPC Citizen Advisory Committee, and Action For Healthy Kids meetings.
- Distributed 6 monthly Wellness Newsletters to approximately 1000 subscribers.



Early Head Start and Help Me Grow

These programs are both designed to help low income families, and teen moms, raise children who are prepared to excel when they enter school. Families receive parenting education and the children are assessed to identify any developmental delays early. Entering school ready to learn is a key factor in increasing graduation rates.



Breast and Cervical Cancer Project (BCCP) and the Screening and Survivor Support (SASS) for Breast Cancer Program



These programs help to reduce the loss of life from breast and cervical cancer in Licking County. Early detection leads to improved survival rates. To increase screening rates, income and age qualifying women can receive free pap tests and mammograms through these programs.

Extended Office Hours

The Licking County Health Department expanded its hours on Tuesday evenings beginning on Tuesday, June 7.

Offering evening hours will make it more convenient for working individuals to take advantage of our services and assist working parents in getting their children vaccinated. It is our hope in offering these hours we will be able to protect and improve the health of the residents of Licking County.

The Health Department's Vital Statistics Office will be open from 8:00 AM until 7:00 PM on Tuesdays. This will allow residents to obtain birth and death certificates and apply for environmental health permits and licenses beyond the department's traditional hours. In addition, the Health Department's immunization clinic and sexual health clinic will now take appointments until 6:30 PM.



Sexually Transmitted Disease Reduction Initiative

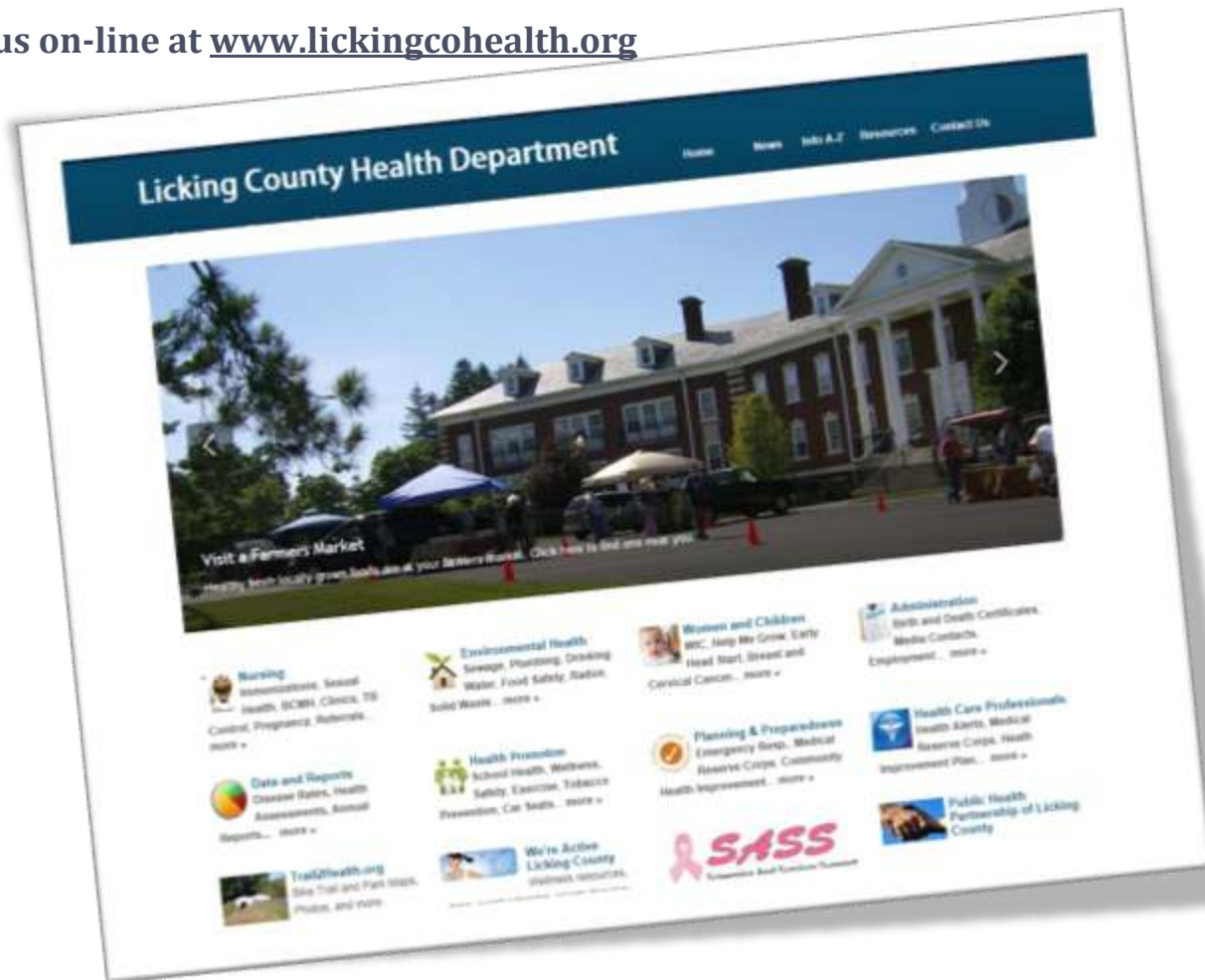


LCHD is working to reduce STD rates through education, screening, and treatment.

The only way to determine if one has an STD is to be checked by a health care provider. The Licking County Health Department offers a free, confidential STD clinic each Tuesday by appointment only. Appointments can be made by calling (740) 349-6535.

For more information, please visit: www.lickingcohealth.org or visit: www.cdc.gov/std.

Visit us on-line at www.lickingcohealth.org



Licking Co. Health Dept.
675 Price Rd.
Newark, OH 43055