

# 2013

Licking County  
Health Department



**Public Health**  
Prevent. Promote. Protect.

# Mid-Year Report

## Our Mission:

Prevent Disease, Protect the Environment, and Promote Healthy Lifestyles in the Licking County Combined General Health District.

## Our Vision:

Healthy People in Healthy Communities

Licking County Health Department  
675 Price Rd., Newark OH 43055  
(740) 349-6535

[www.lickingcohealth.org](http://www.lickingcohealth.org)

R. Joseph Ebel R.S., M.S., M.B.A.  
Health Commissioner





## Health Commissioner's Report

Joe Ebel, R.S., M.S., M.B.A.

### So far this year:

- Investigated 3 confirmed and 1 suspect gastro-intestinal disease outbreaks.
- *Change Gears, Ride a Bike*, bike ride event attendance, estimated at 150, was up from 2012.
- Secured Ohio Local Government Innovation grant for \$100,000 to study the feasibility of being a regional grant writing and grant management center serving other area health districts.
- In March our Board of Health completed a SWOT analysis and strategic plan update.
- The County Health Rankings report placed Licking County as 32nd in Health Outcomes, based on premature death, health status, and low birth weight infants.
- The rankings place us 24th in Health Factors, which includes; health behaviors, clinical care, social and economic factors, and the physical environment.

### What's next?

After reviewing our community health assessment and the County Health Rankings, a variety of health issues stand out. Many of which are addressed in our Community Health Improvement and Strategic Plans. The one issue that stands out the most, and that we have struggled to have an impact on, is **smoking rates**.

Licking County's adult smoking rate is 26% based on our 2012 BRFSS survey, this is higher than the state average of 22%, and higher than our peer counties. Delaware 11%, Fairfield 22%, and Wood 14%.

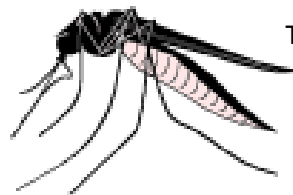
I have set a Big Goal of **reducing smoking rates in Licking County by 50% over the next 10 years**. This will require a coordinated effort, mobilizing the resources of numerous community partners, identification of best practices, and securing funding to implement initiatives. LCHD will lead this effort that will impact the leading cause of premature death in Licking County. Meeting this goal will result in reducing lung cancer, COPD, heart disease, and other health and economic impacts.

Anyone interested in participating in this project should contact Nicole Smith, Health Educator, at (740) 349-1663 or email [nsmith@lickingcohealth.org](mailto:nsmith@lickingcohealth.org)

Risk Factors and Critical Health Issues	Compared to Licking County				Ohio BRFSS 2011
	2012 BRFSS (Weighted Percentage)	2011 BRFSS (Weighted Percentage)	2008 BRFSS	2006 BRFSS	
General health status is fair or poor	15%	Similar (18%)	Similar (18%)	Similar (18%)	Similar (18%)
No health care coverage (Ages 18-64)	13%	Similar (15%)	Similar (14%)	Higher (8%)	Similar (17%)
Mammogram in past 2 years (Ages 40+)	83%	Similar (84%)	Higher (77%)	n/a	Higher (74% <sup>§</sup> )
Diagnosed diabetes	14%	Similar (12%)	Similar (12%)	Similar (11%)	Similar (10%)
<b>Current smoking</b>	<b>26%</b>	<b>Similar (25%)</b>	<b>Similar (27%)</b>	<b>Higher (21%)</b>	<b>Similar (25%)</b>
Binge drinking	20%	Higher (15%)	Higher (13%)	Higher (11%)	Similar (20%)
Overweight (BMI between 25.0 and 30.0)	35%	Similar (33%)	Lower (40%)	n/a	Similar (36%)
Obese (BMI greater than 30.0)	37%	Similar (33%)	Higher (29%)	n/a	Higher (30%)
Adult "always" wears seatbelts	82%	Lower (88%)	Similar (82%)	Higher (77%)	Lower (90%)
Exercised in the last month	70%	Similar (67%)	n/a	n/a	Similar (73%)

# Environmental Health Division

Mid-Year Environmental Health Statistics	First Half 2012			First Half 2013		
	Permits	Inspect	Consult	Permits	Inspect	Consult
Food Service Operations	531	765	121	535	742	327
Food Establishments	203	232	34	205	229	266
Mobile	76	149	6	75	144	48
Vending	120	53	2	122	45	2
Temporary Food Event	67	36	0	67	55	19
Manufactured Home Park	36	41	2	38	32	0
Campground	13	13	2	12	4	0
Day Camp	9	5	0	7	1	0
Pools and Spas	74	191	6	76	185	8
Bathing Beaches	3	3	0	1	2	0
Waste Facility	3	230	13	3	189	13
Schools	74	84	11	74	84	34
Tattoo/Body Piercing	9	2	3	12	10	3
New Sewage Installations	22	53	15	41	52	107
Sewage Alterations	16	16	2	38	62	10
Existing Sewage Systems		145	12		184	23
Semi-Public Sewage	312	331	3	319	322	1
Private Water Systems	69	79	33	96	84	100
Plumbing Residential	214	417	8	225	420	11
Plumbing Commercial	86	237	26	86	237	26
Water Samples Collected		244			195	
Nuisance Complaints	#	Inspections		#	Inspections	
Solid Waste	304	300		242	229	
Sewage	29	53		41	29	
Food	77	72		74	62	
Smoking	8	7		16	13	
Other	10	29		13	7	
Total	428	461		386	340	
Rabies / Animal Bites						
Dog	133			111		
Cat	39			50		
Raccoon	5			1		
Other	5			6		



The unusually wet weather brought high numbers of mosquitoes which are capable of carrying disease. Our vector control staff have been busy treating standing water to control mosquito breeding sites, and spraying to reduce adult mosquito populations when needed.

## Public Health Nursing and Child and Family Health Services

Nursing Programs	Jan-June 2012	Jan-June 2013
Immunizations (# of Children)	737	561
International Travel Vaccine Clients	293	245
HIV Testing	321	254
STD Clinic Clients	343	342
Women's Health Clinic	40	50
Help Me Grow Home Visits	318	167
Early Head Start Home Visits	1,019	1,293
At Risk Pregnancy Consultations	1,086	1,142
Breast & Cervical Cancer Program (BCCP) Women Served	999	801
BCMh Visits/Consultations	127	102
Dental Sealant Children Served	1,136	789
TB Tests	404	375
Home Health Visits	31	105
Patient Navigation Referrals	263	93

### ***Travel Vaccination Clinic***

Country information, health precautions, official health data and travel warnings.

Immunizations for various diseases based on the prevalence of disease in specific countries.



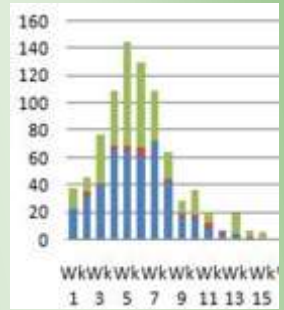
Licking County's Women, Infant, and Children's Supplemental Nutrition Program (WIC) provides nutrition education and screening, supplemental foods, and referrals for women (pregnant, postpartum, and breastfeeding), infants, and children less than 5 years old.

WIC Clinic Caseload: Newark, Price Rd. office - 2580, Johnstown - 189, Buckeye Lake - 133, and Pataskala - 481.

Our "Partners in Breastfeeding" support group meets every month on the 4th Thursday at 10:30am. In addition, a Breastfeeding Class is offered every other month, on the 2<sup>nd</sup> Thursday at 2pm. Both are open to the entire community to increase awareness of breastfeeding and provide a source of answers, support and encouragement for breastfeeding moms.

<b>Communicable Disease Report Jan-June</b>	<b>2012 MidYear</b>	<b>2013 MidYear</b>
Amebiasis	0	0
Botulism, infant	1	0
Brucellosis	0	0
Campylobacteriosis	26	26
Chlamydia	293	249
Coccidioidomycosis	1	0
Creutzfeldt-Jakob Disease	0	0
Cryptosporidiosis	2	1
E. coli - enterohemorrhagic (shiga toxin producing) - Not O157:H7	1	6
E. coli - enterohemorrhagic (shiga toxin producing) O157:H7	0	0
E. coli - enterohemorrhagic (shiga toxin producing) Unknown serotype	0	1
Giardiasis	1	2
Gonorrhea	30	51
Haemophilus influenzae (invasive disease)	4	0
Hemolytic uremic syndrome (HUS)	0	0
Hepatitis A	1	0
Hepatitis B (including delta) - acute	2	1
Hepatitis B (including delta) - chronic	6	4
Hepatitis C - acute	0	1
Hepatitis C - chronic	45	66
Influenza-Hospitalized	1	16
Influenza-Seasonal	37	771
LaCrosse virus disease (other California serogroup virus disease)	0	0
Legionellosis - Legionnaires' Disease	0	3
Leptospirosis	0	0
Listeriosis	0	0
Lyme Disease	3	2
Meningitis - aseptic/viral	3	1
Meningitis - bacterial (Not N. meningitidis)	1	0
Meningococcal disease - Neisseria meningitidis	0	0
Mumps	7	0
Pertussis	13	51
Rabies - animal	0	0
Rocky Mountain spotted fever (RMSF)	1	0
Salmonellosis	14	9
Shigellosis	1	7
St. Louis encephalitis virus disease	0	0
Streptococcal - Group A -invasive	2	2
Streptococcal - Group B - in newborn	1	0
Streptococcal toxic shock syndrome (STSS)	0	0
Streptococcus pneumoniae - invasive antibiotic resistance unknown	16	6
Varicella	13	7
West Nile virus disease (also current infection)	0	0

## Epidemiology



The Epidemiologist tracks disease rates and trends to help reduce infection rates.

Our EPI team was busy this spring investigating over 100 gastro-intestinal disease cases linked to 3 confirmed, and 1 suspected outbreak.

The most common cause was Norovirus, which causes symptoms that usually include diarrhea, throwing up, nausea, and stomach cramping.

Norovirus can spread quickly through contaminated food and from person to person in crowded, closed places like long-term care facilities, daycare centers, schools, hotels, and cruise ships.

## Emergency Preparedness

- Participated in Local Integrated Healthcare Disaster Planning meetings.
- Continued improvement on monitoring infectious disease rates.
- Created a Volunteer Steering Committee consisting of Medical Reserve Corps, Red Cross, and Community Emergency Response Team volunteers.
- Expanded membership in the Licking County Medical Reserve Corps (MRC).
- Conducted a MRC Volunteer Notification Drill.
- Participated in a Foodborne Disease Outbreak Exercise.
- Exercised afterhours phone system for reporting infectious diseases and epidemiological team notification.
- Increased the number of Closed Points of Dispensing (POD) in Licking County.
- Responded to two Norovirus outbreaks and one Shigella/Norovirus outbreak.



## Health Promotion and Education

- Provided free car seats to 48 low income families and 41 installation checks.
- The LCHD led Licking County Wellness Coalition program held the 4<sup>th</sup> annual Change Gears bike event and distributed 88 bike helmets, 52 reflective bands, 14 bike bells, and 82 water bottles to the 150 participants.



- Free mammograms were provided to **152** women through the SASS (Screening and Survivor Support) breast cancer program. Of those 152 women, 17 received diagnostic follow-up testing.
- Hosted “Spring into Pink” with guest speaker Maria Durant (ABC6/FOX28).
- 1,400 3rd grade children received health, exercise, and wellness lessons.
- Traffic safety initiatives included Motorcycle Safety, Super Bowl Impaired Driving Prevention, and Click it or Ticket, St. Patrick’s Day, and Prom/Graduation campaigns.
- Participated in “Our Futures in Licking County” campaign activities and committees. Conducted 59 alcohol sale to minors compliance checks.
- Attended health fairs, parades, and events throughout the county.
- Participated in: Newark Mobility Committee and Action For Healthy Kids meetings.
- Distributed 6 Wellness Newsletters to 696 subscribers.
- Held 4th Worksite Wellness Workshop with 37 attendees.
- Tobacco Prevention: Trained 4 healthcare providers in 2A’s + R cessation counseling. Surveyed 21 residents at one complex about smoke-free housing. Advertised the Ohio Quitline with 6 billboards and 30,000 Valpak ads. One school updated their tobacco-free school campus policy.



## Early Head Start

These programs are both designed to help low income families, and teen moms, raise children who are prepared to excel when they enter school. Families receive parenting education and the children are assessed to identify any developmental delays early. Entering school ready to learn is a key factor in increasing graduation rates.

## Breast and Cervical Cancer Project (BCCP) and the Screening and Survivor Support (SASS) for Breast Cancer Program



These programs help to reduce the loss of life from breast and cervical cancer in Licking County. Early detection leads to improved survival rates. To increase screening rates, income and age qualifying women can receive free pap tests and mammograms through these programs. Donations to support our breast cancer

program are used to pay for mammograms and to offset expenses for items like wigs. Donations may be made to the Public Health Partnership of Licking County. [www.phplc.org](http://www.phplc.org)

## Sexually Transmitted Disease Reduction Initiative



LCHD is working to reduce STD rates through education, screening, and treatment.

The only way to determine if one has an STD is to be checked by a health care provider. The Licking County Health Department offers a free, confidential STD clinic each Tuesday by appointment only. Appointments can be made by calling (740) 349-6535.

For more information, please visit: [www.lickingcohealth.org](http://www.lickingcohealth.org) or visit: [www.cdc.gov/std](http://www.cdc.gov/std).

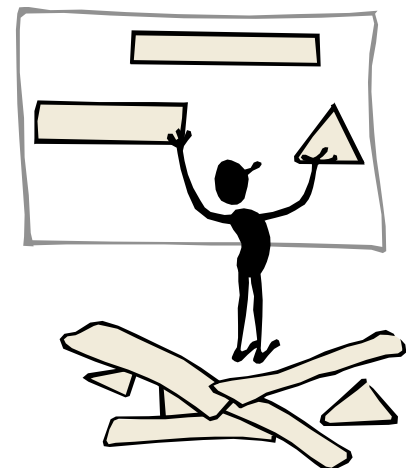
## Forces of Change Summary:

On April 11, 2013, the Licking County Community Health Improvement Committee (CHIC) conducted a Forces of Change (FOC) Assessment as part of its ongoing commitment to improving public health in Licking County and its commitment to the Mobilizing for Action through Planning and Partnerships (MAPP) process. The FOC assessment is designed to answer the questions “What is occurring or might occur that could affect the health of our community?” and “What specific threats or opportunities are generated by these items?”

The top 6 Forces of Change identified by the committee were:

1. Population Growth
2. Health Communication
3. Economy
4. Healthcare Reform
5. Wellness-Health Status
6. Environmental Factors

The CHIC will work to develop interventions designed to capitalize on the opportunities and overcome the threats identified as part of the assessment.



Visit us on-line at [www.lickingcohealth.org](http://www.lickingcohealth.org)



Licking Co. Health Dept.  
675 Price Rd.  
Newark, OH 43055