

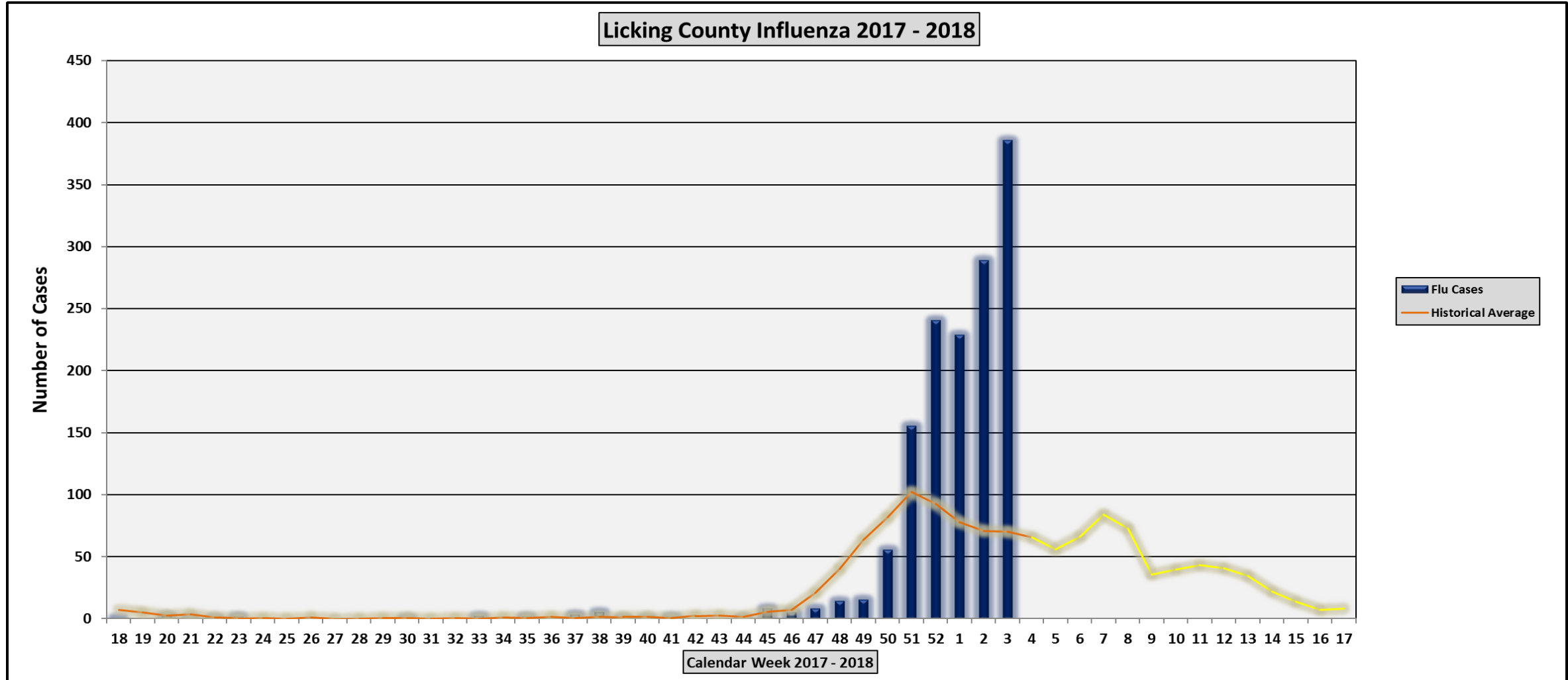
Influenza Report Week 3

January 14 - 20, 2018

Influenza Reporting Information System
(IRIS)



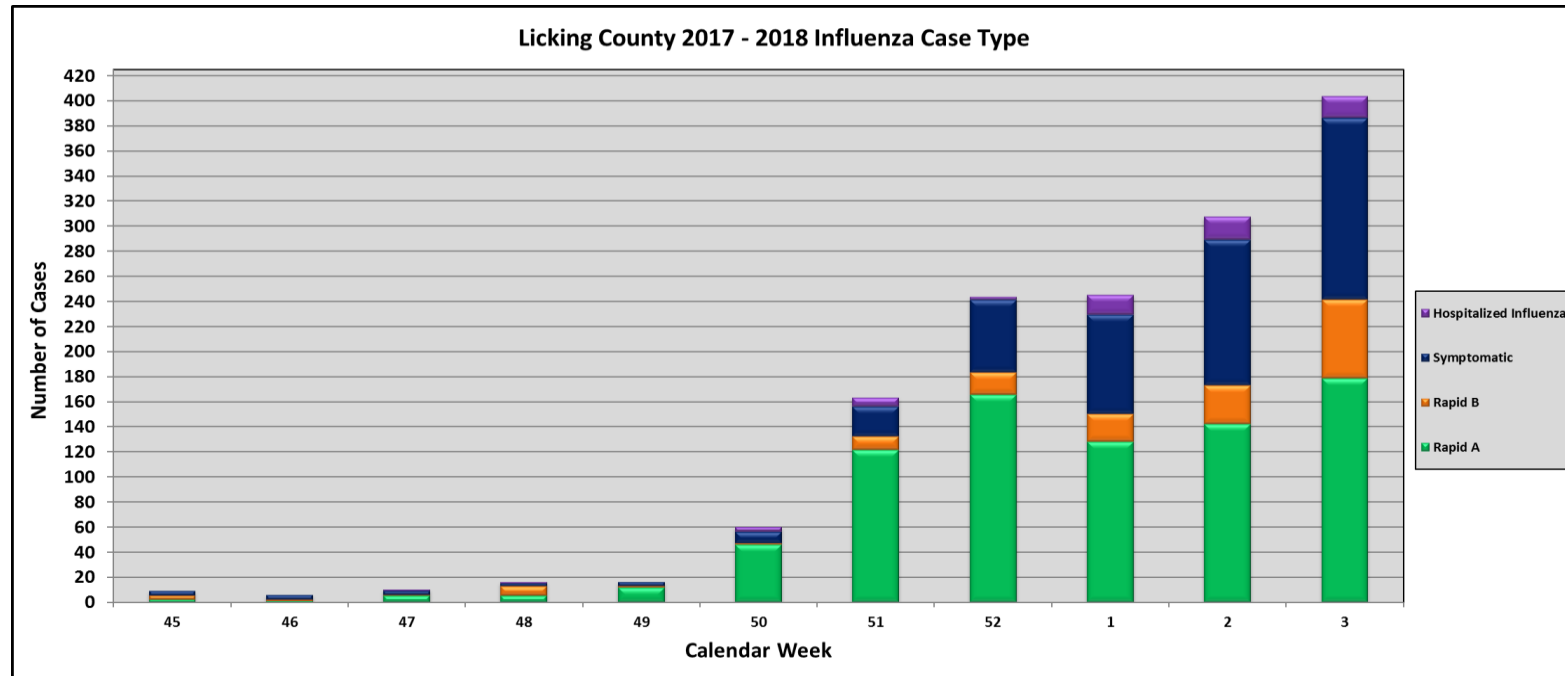
Influenza Reporting Information System (IRIS)



Healthy people living in healthy communities

Influenza Reporting Information System (IRIS)

Influenza Case Type					
Type	Week				
	51	52	1	2	3
Rapid A	121 (74.2%)	165 (67.9%)	128 (52.2%)	142 (46.3%)	178 (44.2%)
Rapid B	11 (6.7%)	18 (7.4%)	22 (9.0%)	31 (10.1%)	63 (15.6%)
Symptomatic	24 (14.7%)	58 (23.9%)	79 (32.2%)	116 (37.8%)	145 (36.0%)
Hospitalized	7 (4.3%)	2 (0.8%)	16 (6.5%)	18 (5.9%)	17 (4.2%)
TOTAL	163	243	245	307	403

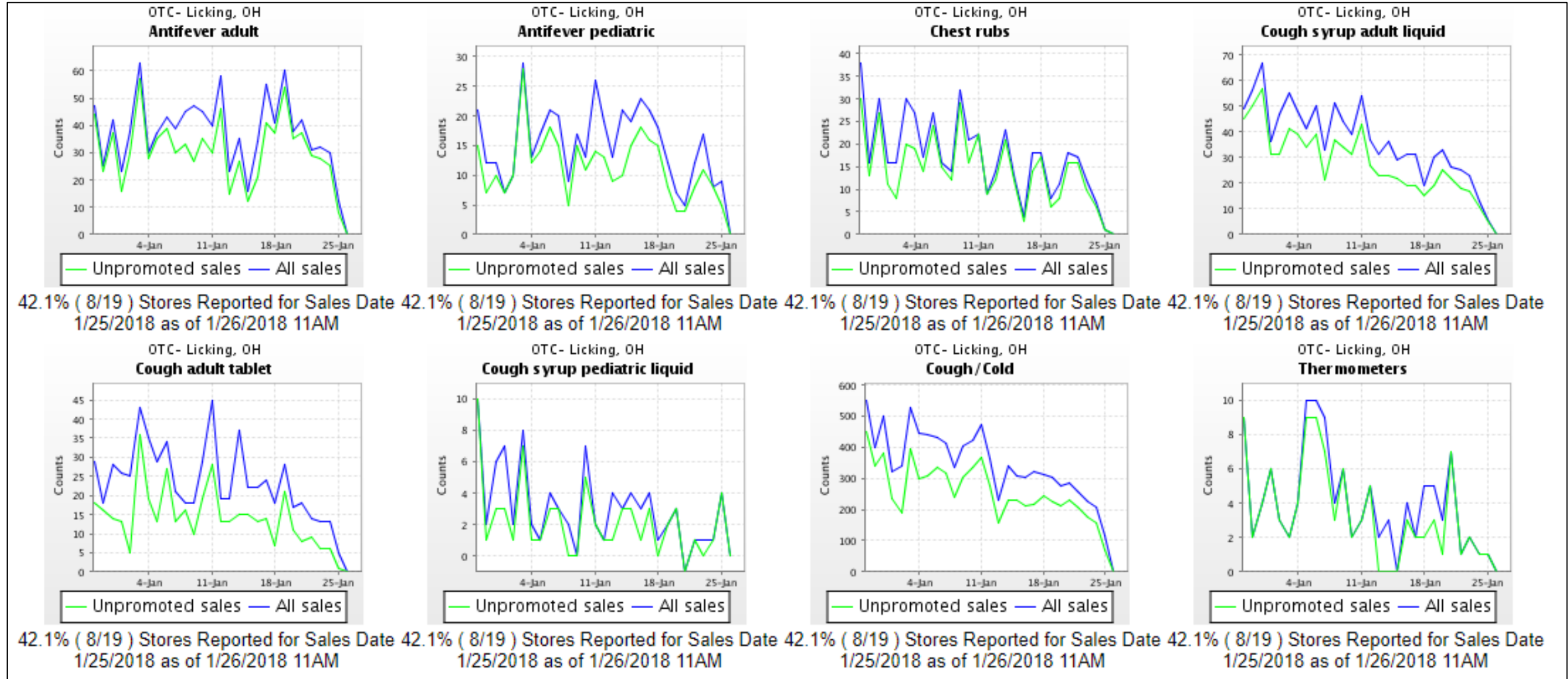


Influenza Reporting Information System (IRIS)

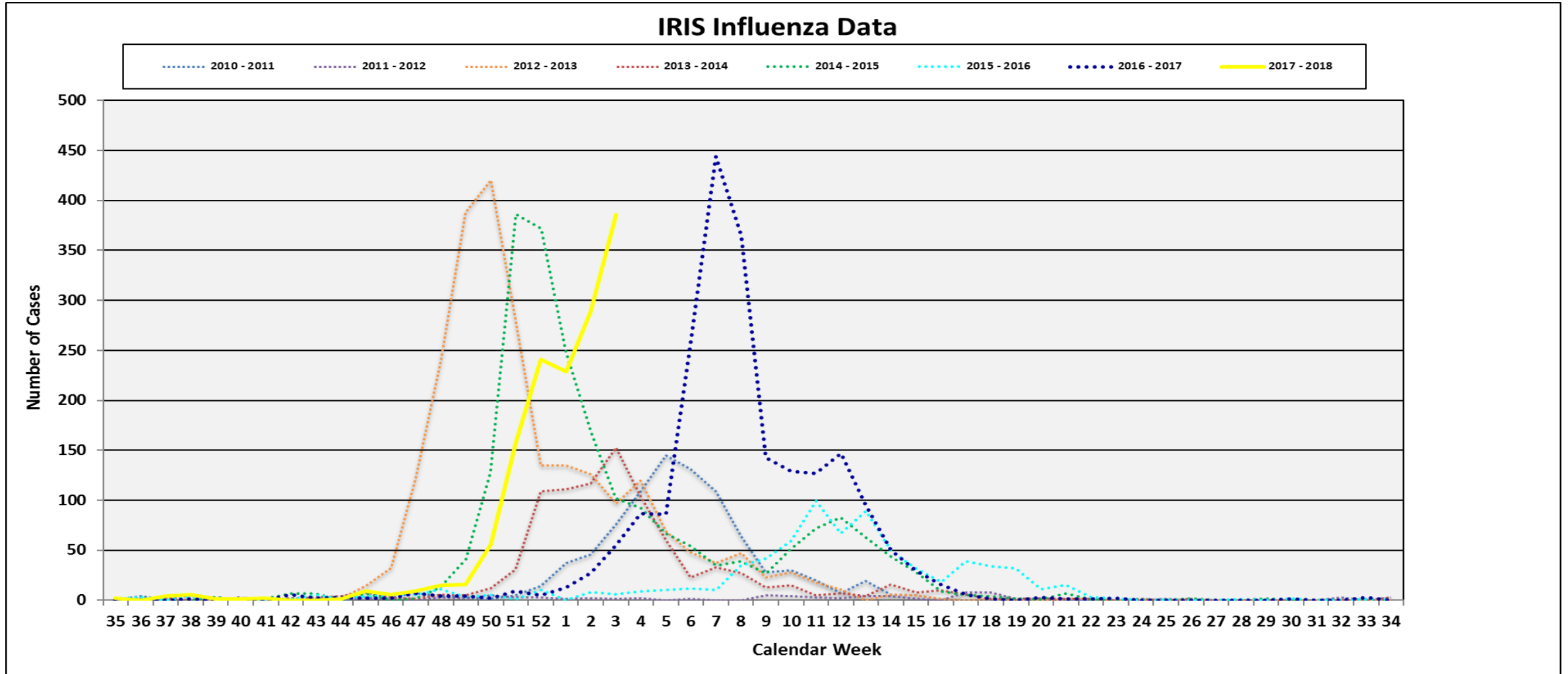


Influenza 2017 - 2018 Season					
Week	Type				TOTAL
	Rapid A	Rapid B	Symptomatic	Hospitalized	
30	1	0	0	0	1
31	0	0	0	0	0
32	0	0	0	0	0
33	1	0	2	0	3
34	0	0	0	0	0
35	1	1	0	0	2
36	0	0	0	0	0
37	2	1	1	0	4
38	0	2	4	0	6
39	0	0	1	0	1
40	0	1	0	0	1
41	2	0	0	0	2
42	0	0	0	0	0
43	0	0	0	0	0
44	1	0	0	0	1
45	2	3	4	0	9
46	1	1	4	0	6
47	5	1	3	1	10
48	5	8	2	1	16
49	12	1	3	0	16
50	46	1	9	4	60
51	121	11	24	7	163
52	165	18	58	2	243
1	128	22	79	16	245
2	142	31	116	18	307
3	178	63	145	17	403
TOTAL	813	165	455	66	1499

Influenza Reporting Information System (IRIS)



Influenza Reporting Information System (IRIS)



Influenza Reporting Information System (IRIS)



Summary Week 3 (Influenza Season 2017 - 2018)

Reporting for Week 3 was at 66.7 percent with seven providers not submitting influenza statistics. Influenza activity for Week 3 increased by 31.3 percent compared to the previous week. Rapid A's were the most reported type of influenza making up 44.2 percent of all cases for the week.

For more information about flu vaccine, contact the Licking County Health Department at 740-349-6535.