



Licking County Health Department

675 Price Road • Newark, Ohio 43055
Business: (740) 349-6535 • Fax: (740) 349-6510
www.LickingCoHealth.org

FACE COVERING HEALTH ORDER FAQ'S

Governor Mike DeWine has announced that face coverings are mandated for all Ohioans until further notice.

What is considered a mask/face covering?

For the purposes of the Order, a facial covering (mask) is any material that covers an individual's **nose, mouth, and chin**.

What does the Order actually require?

All individuals in Licking County shall wear facial coverings at all times when:

- In any indoor location that is not a residence
- Outdoors and unable to consistently maintain a distance of six feet or more from individuals who are not members of their household; or
- Waiting for, riding, driving, or operating public transportation, a taxi, a private care service, or a ride sharing vehicle. This does not apply to private or rental vehicles where members of a family are sharing a vehicle. This does not apply to vehicles engaged in direct travel through a county that does not stop in that county.

Who will enforce the Order?

LCHD will accept complaints from the public about persons not wearing masks and will follow up as we are able. In order for LCHD to respond in a timely and organized manner, please email complaints to StayAtHome@LickingCoHealth.org. No fines are planned at this time unless a particular city/village in Licking County has established its own face covering ordinance.

How long will it last?

The requirement to wear a facial covering shall continue until further notice until Ohio Governor DeWine announces otherwise.





Licking County Health Department

675 Price Road • Newark, Ohio 43055
Business: (740) 349-6535 • Fax: (740) 349-6510
www.LickingCoHealth.org

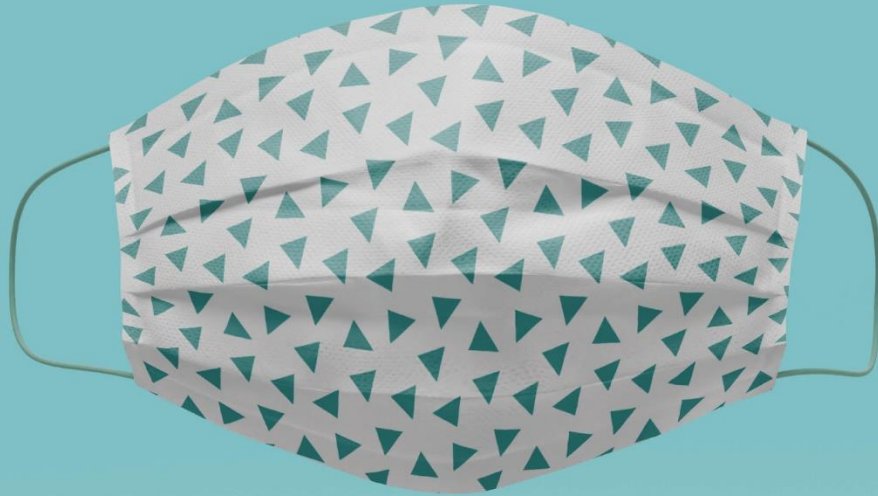
Who is excluded from wearing a face covering/mask?

The requirement to wear a facial covering does not apply when:

- The individual is under ten years of age,
- A medical condition, including those with respiratory conditions that restrict breathing, mental health conditions, or disability contraindicates the wearing of a facial covering,
- The individual is communicating or seeking to communicate with someone who is hard of hearing or has another disability, where the ability to see the mouth is essential for communication
- The individual is alone in an enclosed space, such as an office, and which space is not intended for use or access by the public
- The individual is actively engaged in exercise in a gym or indoor facility so long as six or more feet of separation between individuals exists,
- The individual is actively participating in athletic practice, scrimmage, or competition that is permitted under a separate Department of Health Order
- The individual is actively engaged in a public safety capacity, including but not limited to law enforcement, firefighters or emergency medical personnel,
- The individual is seated and actively consuming food or beverage in a restaurant or bar,
- Facial coverings are prohibited by law or regulation,
- Facial coverings are in violation of documented industry standards,
- Facial coverings are in violation of a business's documented safety policies,
- Individual is actively participating in broadcast communications, or
- Individual is an officiant of a religious service

See more information and data about Licking County's current level ranking in the Ohio Public Health Advisory Alerting System [here](#).

MASKS ON IN LICKING COUNTY



COVID-19

Please Note: Face Coverings Required Here

- Face coverings/masks are mandated in all Ohio counties until further notice.
- All individuals in Licking County shall wear facial coverings that cover their **nose, mouth, and chin** at all times when in any indoor location that is not a residence.